

NEOENERJI Clean Energy

www.neoenerji.com
E: info@neoenerji.com
T: +90.212.6715444
F: +90.212.6715400



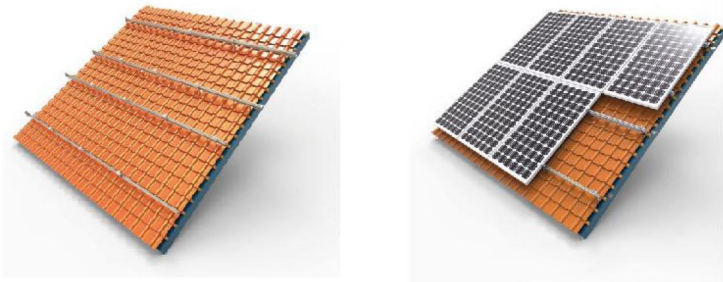
NEOENERJI CLEAN ENERGY

2018



ROOF MOUNTING SYSTEM

HOOK SYSTEM



Technical Characteristics

Neoenerji Hooks, are mainly made of SUS304 and AL6005-T5 material. They are applicable for installation on rooftops and used in Z shape installation, which is firm and convenient. Standard Items, which is easy to assemble on the spot and achieves to save the labor cost, has been under pre-installation to the maximum extent, all are made of SUS304 material.

Anti-Snow Grade: 1.4 KN/㎡

Anti-Wind Grade: 60 m/s

Angle: Less than 60°

Quality Assurance: 10 Years QA and 25 Years Service Life

Standards-Compliant: AS/NZS1170, Euro Code 8, DIN 1055, IBC 2006, JIS C8955/C8955-2011, GB50009-2012

Serial No.	Definition	Item No.	Dimension (Length*Width*Height mm)	Material	Accessory Dimension	Surface Technology
1	No. 1 Hook	HPX-HWG-01	180*154*166mm	SUS304	Wood Screw 8*80*M8*25	Passivation
2	No. 2 Hook	HPX-HWG-02	87*236*195mm		Wood Screw 8*80*M8*25	
3	No. 3 Hook	HPX-HWG-03	180*154*166mm		Wood Screw 8*80*M8*25	
4	No. 4 Hook	HPX-HWG-04	180*195*145mm		Wood Screw 8*80*M8*25	
5	No. 5 Hook	HPX-HWG-05	180*165*195mm		Wood Screw 8*80*M8*25	
6	No. 6 Hook	HPX-HWG-06	286*30*167mm		Wood Screw 8*80*M8*25	
7	No. 7 Hook	HPX-HWG-07	286*30*121mm		Wood Screw 8*80*M8*25	
8	No. 8 Hook	HPX-HWG-08	140*148*174mm		Wood Screw 8*80*M8*25	
9	No. 9 Hook	HPX-HWG-09	200*30*120mm		Wood Screw 8*80*M8*25	
10	No. 10 Hook	HPX-HWG-10	200*30*75mm		Wood Screw 8*80*M8*25	



① HPX-HWG-01



② HPX-HWG-02



③ HPX-HWG-03



④ HPX-HWG-04



⑤ HPX-HWG-05



⑥ HPX-HWG-06



⑦ HPX-HWG-07



⑧ HPX-HWG-08



⑨ HPX-HWG-09



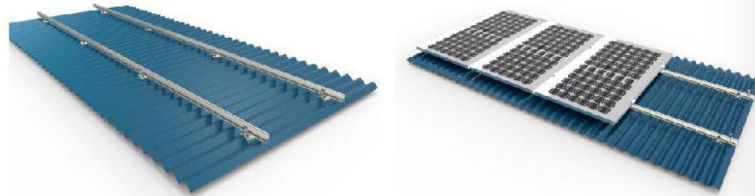
⑩ HPX-HWG-10





ROOF MOUNTING SYSTEM

T-CLAMP SYSTEM



Technical Characteristics

Neoenerji Hooks, are mainly made of SUS304 and AL6005-T5 material. They are applicable for installation on rooftops and used in Z shape installation, which is firm and convenient. Standard Items, which is easy to assemble on the spot and achieves to save the labor cost, has been under pre-installation to the maximum extent, all are made of SUS304 material.

Anti-Snow Grade: 1.4 KN/m²

Anti-Wind Grade: 60 m/s

Angle: Less than 60°

Quality Assurance: 10 Years QA and 25 Years Service Life

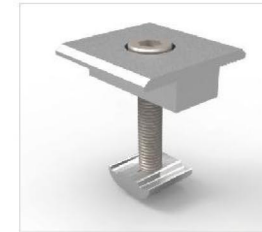
Standards-Compliant: AS/NZS1170, Euro Code 8, DIN 1055, IBC 2006,

JIS C8955/C8955-2011, GB50009-2012

Serial No.	Definition	Item No.	Dimension/Characteristic	Material	Standard Item Material	Surface Technology
1	Double Row End Clamp	HPX-SCY-XX	32/35/40/45/50mm	AL6005-T5	SUS304	Anodizing/ Electro-deposited
2	Double Row Inner Clamp	HPX-SZY-XX	32/35/40/45/50mm			
3	Longitudinal Rail	HPX-HZXR	/			
4	No. 1 T-CLAMP	HPX-TWJ-01	100	SUS304		Passivation
5	No. 2 T-CLAMP	HPX-TWJ-02	100			
6	No. 3 T-CLAMP	HPX-TWJ-03	100			



① HPX-SCY-XX



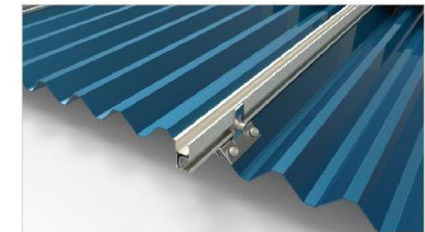
② HPX-SZY-XX



③ HPX-HZXR



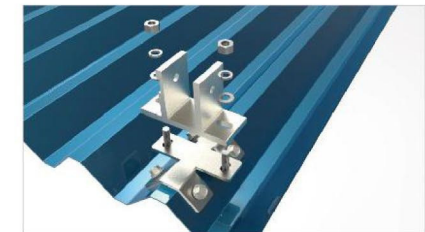
④ HPX-TWJ-01



⑤ HPX-TWJ-02



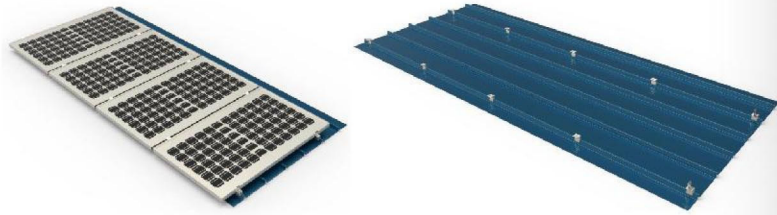
⑥ HPX-TWJ-03





ROOF MOUNTING SYSTEM

TIN ROOF CLAMP II



Technical Characteristics

Neoenerji Hooks, are mainly made of SUS304 and AL6005-T5 material. They are applicable for installation on rooftops and used in Z shape installation, which is firm and convenient. Standard Items, which is easy to assemble on the spot and achieves to save the labor cost, has been under pre-installation to the maximum extent, all are made of SUS304 material.

Anti-Snow Grade: 1.4 KN/m²

Anti-Wind Grade: 60 m/s

Angle: Less than 60°

Quality Assurance: 10 Years QA and 25 Years Service Life

Standards-Compliant: AS/NZS1170, Euro Code 8, DIN 1055, IBC 2006,

JIS C8955/C8955-2011, GB50009-2012

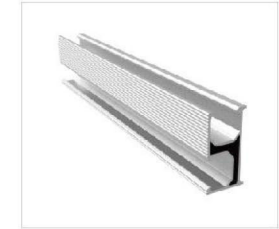
Serial No.	Definition	Item No.	Dimension/ Characteristic	Material	Standard Item Material	Surface Technology
1	Double Row End Clamp	HPX-SCY-XX	32/35/40/45/50mm	AL6005-T5		Anodizing/ Electro- deposited
2	Double Row Inner Clamp	HPX-SZY-XX	32/35/40/45/50mm			
3	Longitudinal Rail	HPX-HZXR	/			
4	TIN ROOF CLAMP II-1	HPX-JWJ-01	/	SUS304	SUS304	Passivation
5	TIN ROOF CLAMP II-2	HPX-JWJ-02	/			
6	TIN ROOF CLAMP II-3	HPX-JWJ-03	/			
7	TIN ROOF CLAMP II-4	HPX-JWJ-04	/			
8	TIN ROOF CLAMP II-5	HPX-JWJ-05	/			
9	TIN ROOF CLAMP II-6	HPX-JWJ-06	/			
10	TIN ROOF CLAMP II-7	HPX-JWJ-07	/			



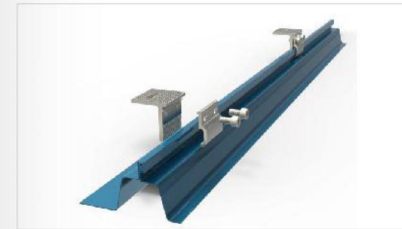
① HPX-SCY-XX



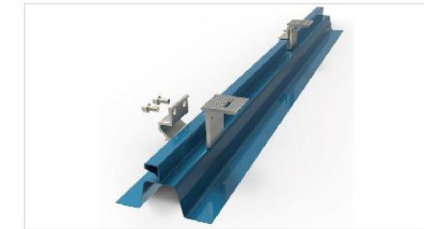
② HPX-SZY-XX



③ HPX-HZXR



④ HPX-JWJ-01



⑤ HPX-JWJ-02



⑥ HPX-JWJ-03



⑦ HPX-JWJ-04



⑧ HPX-JWJ-05



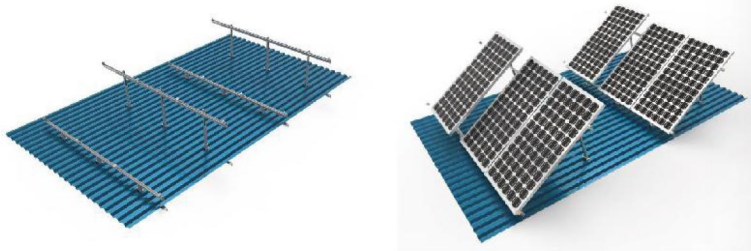
⑨ HPX-JWJ-06



⑩ HPX-JWJ-07



ROOF MOUNTING SYSTEM ADJUSTABLE BRACKET



Technical Characteristics

Neoenerji adjustable support is one kind of structure, which is applicable to install on the rooftops uses with rooftop's tooling. All material are made of AL6005-T5. Standard Item is made of SUS304. Structure, which has been under pre-installation to the maximum extent, is concise and firm, and it is easy to assemble on the spot and achieves labor cost saving.

Anti-Snow Grade: 1.4 KN/m²

Anti-Wind Grade: 55 m/s

Angle: 10°-60°

Arrangement: Vertical

Quality Assurance: 10 Years QA and 25 Years Service Life

Standards-Compliant: AS/NZS1170, Euro Code 8, DIN 1055, IBC 2006,

JIS C8955/C8955-2011,GB50009-2

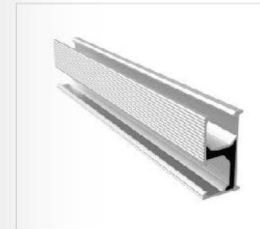
Serial No.	Definition	Item No.	Dimension/ Characteristic	Material	Standard Item Material	Surface Technology
1	Double Row End Clamp	HPX-SCY-XX	32/35/40/45/50mm	AL6005-T5	SUS304	Anodizing/ Electro- deposited
2	Double Row Inner Clamp	HPX-SZY-XX	32/35/40/45/50mm			
3	Adjustable Front Leg	HPX-KTFL	100			
4	Adjustable Back Leg	HPX-KTBL	10°-15° (200/200)			
			15°-30° (360/360)			
			30°-60° (660/660)			



① HPX-SCY-XX



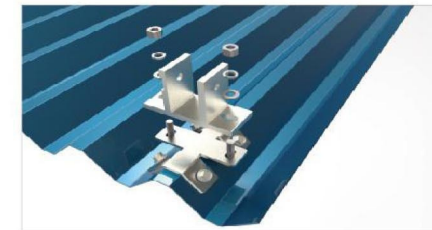
② HPX-SZY-XX



④ HPX-KTFL



⑤ HPX-KTBL





ROOF MOUNTING SYSTEM TRIPOD



Technical Characteristics

Neoenerji Tripod is one kind of structures, which is extensively used on the rooftops and suitable for flat roof, is concise and firm; It is easy to assemble on the spot and achieves to save the labor cost. This kind of structure has been under pre-installation to the maximum extent.

Anti-Snow Grade: 1.4 KN/m²

Anti-Wind Grade: 55 m/s

Angle: 10°-60°

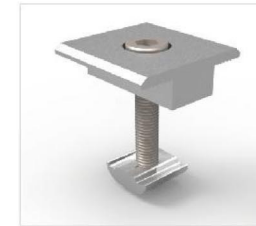
Arrangement: Vertical

Quality Assurance: 10 Years QA and 25 Years Service Life

Standards-Compliant: AS/NZS1170, Euro Code 8, DIN 1055, IBC 2006, JIS C8955/C8955-2011,GB50009



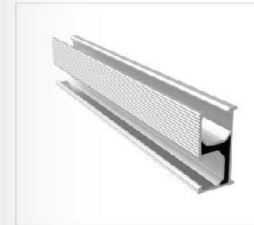
① HPX-SCY-XX



② HPX-SZY-XX



③ HPX-ZXYK



④ HPX-HZXR

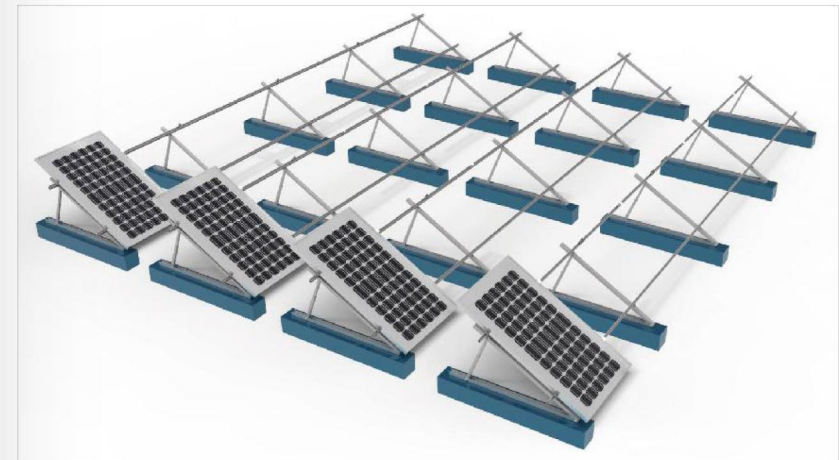


⑤ HPX-SJZJ



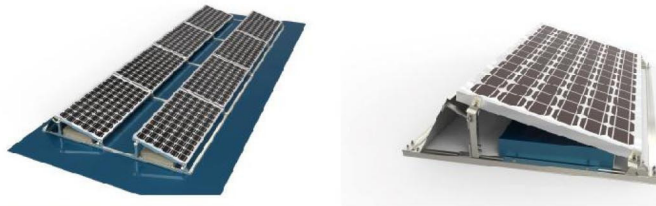
⑥ HPX-SJZYK

Serial No.	Definition	Item No.	Dimension/ Characteristic	Material	Standard Item Material	Surface Technology
1	Double Row Eed Clamp	HPX-SCY-XX	32/35/40/45/50mm	AL6005-T5	SUS304	Anodizing/ Electro- deposited
2	Double Row Inner Clamp	HPX-SZY-XX	32/35/40/45/50mm			
3	Longitudinal Rail Clamp	HPX-ZXYK				
4	Longitudinal Rail	HPX-HZXR				
5	Tripod	HPX-SJZJ	10°-15° (200/200)			
			15°-30° (360/360)			
			30°-60° (660/660)			





ROOF MOUNTING SYSTEM MATRIX SYSTEM



Technical Characteristics

Neoenerji Rooftop Matrix System, is made of AL 6005-T5 and SUS304 and connector is made of SUS304. The structure is concise, solid and looks in good appearance and is easy to assemble and achieves labor cost saving. Cement block is used as the compression structure and assembling will not be destructive to the rooftop. Grengy Rooftop Matrix System is applicable to a variety of rooftops.

Anti-Snow Grade: 1.4 KN/m²

Anti-Wind Grade: 50 m/s

Angle: 8°-30°

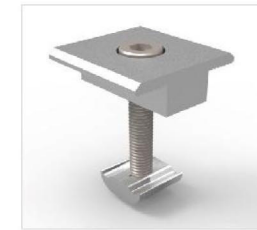
Quality Assurance: 10 Years QA and 25 Years Service Life

Standards-Compliant: AS/NZS1170, Euro Code 8, DIN 1055, IBC 2006, JIS C8955/C8955-2011,GB50009-2012

Serial No.	Definition	Item No.	Dimension/ Characteristic	Material	Standard Item Material	Surface Technology
1	Double Row End Clamp	HPX-SCY-XX	32/35/40/45/50mm	AL6005-T5	SUS304	Anodizing
2	Adjustable Double Row Inner Clamp	HPX-SZY-XX	32/35/40/45/50mm			
3	Matrix System Rail	HPX-JZR				
4	Rail Connector	HPX-JRC	200mm			
5	Matrix System Front Leg	HPX-JZFL	100mm			
6	Matrix System Back Leg	HPX-JZBL	Size According To Angle			
7	Ballast Board	HPX-JZYZ	350mm			
8	Windshield	HPX-JZDF				
9	Double Interface Connector	HPX-DRC	87mm	SUS304	SUS304	
10	Three Interface Connector	HPX-TRC	130mm			



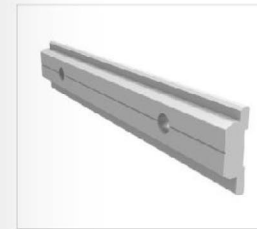
① HPX-SCY-XX



② HPX-SZY-XX



③ HPX-JZR



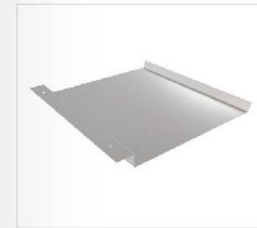
④ HPX-JRC



⑤ HPX-JZFL



⑥ HPX-JZBL



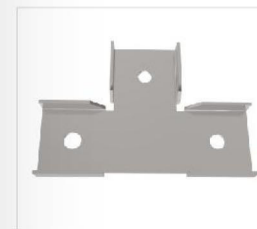
⑦ HPX-JZYZ



⑧ HPX-JZDF



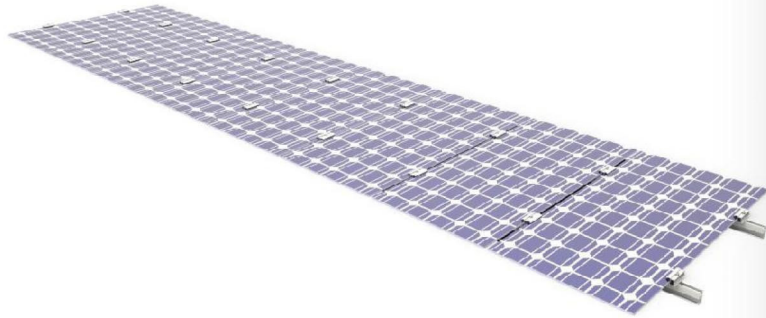
⑨ HPX-DRC



⑩ HPX-TRC



ROOF MOUNTING SYSTEM THIN FILM MODULE



Technical Characteristics

Neoenerji Thin Film Clamp made of high strength aluminium alloy material, used in ground and roof mounting system, simple structure, to be strong and convenient, which is pre-assembled, easy to install and save labour cost.

Anti-Snow Grade: 1.4 KN/m²

Anti-Wind Grade: 55 m/s

Angle: Less than 60°

Arrangement: Vertical

Quality Assurance: 10 Years QA and 25 Years Service Life

Standards-Compliant: AS/NZS1170, Euro Code 8, DIN 1055, IBC 2006, JIS C8955/C8955-2011, GB50009-2

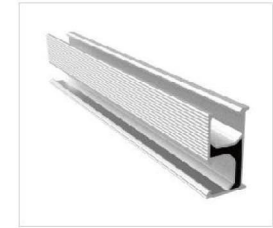
Serial No.	Definition	Item No.	Dimension/Characteristic	Material	Standard Item Material	Surface Technology
1	THIN FILM End Clamp	HPX-BCY-XX	32/35/40/45/50mm	AL6005-T5	SUS304	Anodizing/ Electro-deposited
2	THIN FILM Inner Clamp	HPX-BZY-XX	32/35/40/45/50mm			



① HPX-BCY-XX



② HPX-BZY-XX





GROUND MOUNTING SYSTEM

GROUND MOUNTING SYSTEM I (ALUMINIUM)

Technical Characteristics

Neoenerji Single Row and Double Columns System, is concise, solid and looks in good appearance, is made of all aluminum alloy materials and connector is made of SUS304 material. Relative support is selectable under different project conditions. It will achieve to the best cost performance. This system, that is applied with adjustable design, has been under pre-installation to the maximum extent ; it is easy to assemble on the spot in order to save the labor cost.

Anti-Snow Grade: 1.4 KN/㎡

Anti-Wind Grade: 60 m/s

Angle: 0°-45°

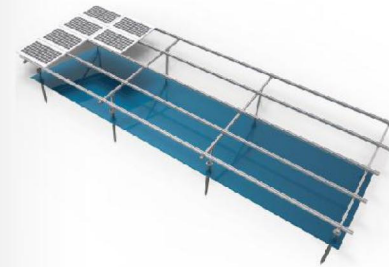
Arrangement: Horizontal (1st section/2nd section/3rd section/4th section/5th section/6th section)

Ground Clearance: 400-2500mm

Quality Assurance: 10 Years QA and 25 Years Service Life

Standards-Compliant: AS/NZS1170, Euro Code 8, DIN 1055, IBC 2006, JIS C8955/C8955-2011,GB50009-2012

Serial No.	Definition	Item No.	Dimension/Characteristic	Material	Standard Item Material	Surface Technology
1	Single Row End Clamp	HPX-DCY-XX	32/35/40/45/50mm	AL6005-T5	SUS304	Anodizing/ Electro-deposited
2	Single Row Inner Clamp	HPX-DZY-XX	32/35/40/45/50mm			
3	Crossbeam Clamp	HPX-HPYK				
4	Crossbeam	HPX-HAR	High, Medium and Low Beams are selectable according to actual project status			
		HPX-HBR				
		HPX-HBR				
5	Crossbeam Connector	HPX-CAC	300			
		HPX-CBC				
		HPX-CCC				
6	Pre-Installation Support	HPX-DYZZJ	4th section/5th section/6th section(N Shape, V Shape, W Shape)			
	Longitudinal Beam					
	Base					
7	Screw Pile	HPX-LXYP-XX	Introduce Separately	Q235	SUS304	Galvanizing



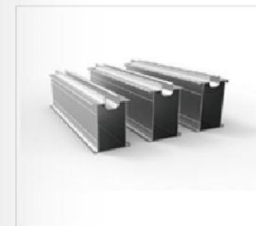
① HPX-DCY-XX



② HPX-DZY-XX



③ HPX-HPYK



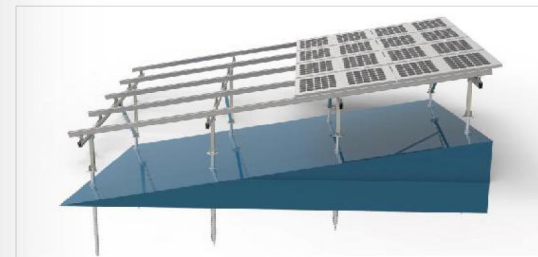
④ HPX-HAR



⑤ HPX-HBR



⑥ HPX-HBR



⑦ HPX-LXYP-XX



GROUND MOUNTING SYSTEM

GROUND MOUNTING SYSTEM II (CARBON STEEL)

Technical Characteristics

Neoenerji Single Row and Double Columns System, is concise, solid and looks in good appearance, is made of all aluminum alloy materials and connector is made of SUS304 material. Relative support is selectable under different project conditions. It will achieve to the best cost performance. This system, that is applied with adjustable design, has been under pre-installation to the maximum extent ; it is easy to assemble on the spot in order to save the labor cost.

Anti-Snow Grade: 1.4 KN/m²

Anti-Wind Grade: 60 m/s

Angle: 0°-45°

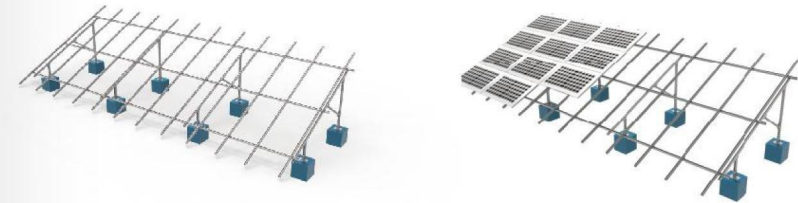
Arrangement: Horizontal (1st section/2nd section/3rd section/4th section/5th section/6th section)

Ground Clearance: 400-2500mm

Quality Assurance: 10 Years QA and 25 Years Service Life

Standards-Compliant: A5/NZS1170, Euro Code 8, DIN 1055, IBC 2006, JIS C8955/C8955-2011,GB50009-2012

Serial No.	Definition	Item No.	Dimension/ Characteristic	Material	Standard Item Material	Surface Technology
1	Single Row End Clamp	HPX-DCY-XX	32/35/40/45/50mm	AL6005-T5	SUS304	Anodizing/ Electro- deposited
2	Single Row Inner Clamp	HPX-DZY-XX	32/35/40/45/50mm			
3	Crossbeam Clamp	HPX-HPYK				
4	Crossbeam	HPX-HAR	High, Medium and Low Horizontal Beams are selectable according to actual project status			
		HPX-HBR				
		HPX-HBR				
5	Crossbeam Connector	HPX-CAC	300			
		HPX-CBC				
		HPX-CCC				
6	Pre-Installation Support	HPX-DYZZJ	4th section/5th section/6th section(N Shape, V Shape, W Shape)			
	Longitudinal Beam					
	Square Pipe 1					
	Square Pipe 2 Base					
7	Screw Pile	HPX-LXYP-XX	Introduce Separately	Q235	SUS304	Galvanizing



① HPX-DCY-XX



② HPX-DZY-XX



③ HPX-HPYK



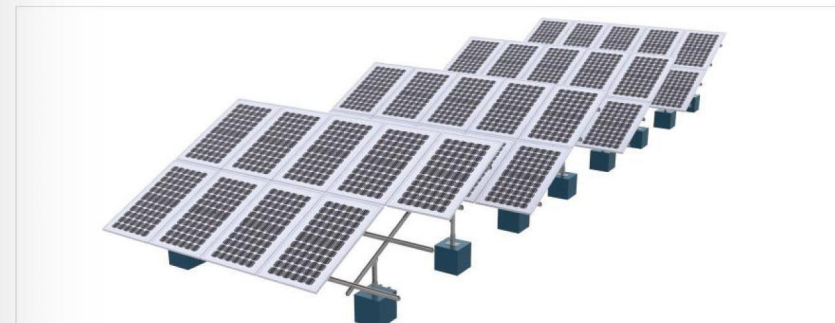
④ HPX-HAR



⑤ HPX-HBR



⑥ HPX-HBR





GROUND MOUNTING SYSTEM

GROUND MOUNTING SYSTEM III

© NEOENERJI CLEAN ENERGY

Technical Characteristics

Neoenerji Horizontal Double Columns System is made of all aluminum alloy and connectors are made of SUS304 material. Relative support is selectable under different conditions, which achieves to the best cost performance. This kind of structure, which has been under pre-installation, is concise and firm and it looks in good appearance and the base is applied with adjustable design. Structure is easy to assemble on the spot and attains to save the labor cost.

Anti-Snow Grade: 1.4 KN/m²

Anti-Wind Grade: 60 m/s

Angle: 0°-45°

Arrangement: Horizontal (1st section/2nd section/3rd section/4th section/5th section/6th section)

Ground Clearance: 400-2500mm

Quality Assurance: 10 Years QA and 25 Years Service Life

Standards-Compliant: AS/NZS1170, Euro Code 8, DIN 1055, IBC 2006, JIS C8955/C8955-2011, GB50009-2012

Serial No.	Definition	Item No.	Dimension/ Characteristic	Material	Standard Item Material	Surface Technology
1	Double Row End Clamp	HPX-DCY-XX	32/35/40/45/50mm	AL6005-T5	SUS304	Anodizing/ Electro- deposited
	Adjustable Double Row End Clamp	HPX-KCY	32-50mm adjustable			
2	Double Row Inner Clamp	HPX-DZY-XX	32/35/40/45/50mm			
	Adjustable Double Row Inner Clamp	HPX-KZY	32-50mm adjustable			
3	Crossbeam Clamp	HPX-HPYK				
4	Crossbeam	HPX-HAR				
5	Crossbeam Connector	HPX-CAC	300			
6	Pre-Installation Support	HPX-SYZZJ	2nd section/3rd section (N shape/V shape/W shape)			
	Longitudinal Beam					
	Square Pipe 1					
	Square Pipe 2					
	Base					
7	Screw Pile	HPX-LXYP-XX	Introduce Separately	Q235	SUS304	Galvanizing

Remarks: Commonly used bases include Screw Pile Base and Cement Base. Graphic is for Cement Base only.



① HPX-DCY-XX



① HPX-KCY



② HPX-DZY-XX



② HPX-KZY



③ HPX-HPYK



④ HPX-HAR



⑤ HPX-SYZZJ



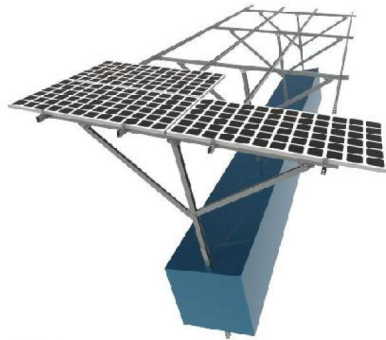
⑥ HPX-SYZZJ



⑦ HPX-LXYP-XX



GROUND MOUNTING SYSTEM POLE MOUNTING SYSTEM



Technical Characteristics

Neoenerji Single Row Support system, which is concise, solid, looks in good appearance and is easy to assemble and it is in low cost and achieves to labor cost saving, is made of Q235 Galvanizing material and connectors is made of Q235 Galvanizing Material.

Anti-Snow Grade: 1.4 KN/㎡

Anti-Wind Grade: 50 m/s

Angle: 0°-30°

Arrangement: Horizontal (2nd section/3rd section)

Minimum depth breaking into the ground: 1400mm

Ground Clearance: 2500-3500mm

Quality Assurance: 10 Years QA and 25 Years Service Life

Standards-Compliant: AS/NZS1170, Euro Code 8, DIN 1055, IBC 2006, JIS C8955/C8955-2011, GB50009-2012

Serial No.	Definition	Item No.	Dimension/ Characteristic	Material	Standard Item Material	Surface Technology
1	Single Row End Clamp	HPX-LCY-XX	32/35/40/45/50mm	Q235	Q235	Galvanizing Processing
2	Single Row Inner Clamp	HPX-LZY-XX	32/35/40/45/50mm			
3	Crossbeam	HPX-TAR				
4	Crossbeam Connector	HPX-CCC	300mm			
5	Pre-Installation Support	HPX-LYZZJ	2nd section/ 3rd section			
	Inclined Bar					
	Main Beam Connector					



① HPX-LCY-XX



② HPX-LZY-XX



③ HPX-TAR



④ HPX-CCC



⑤ HPX-LYZZJ



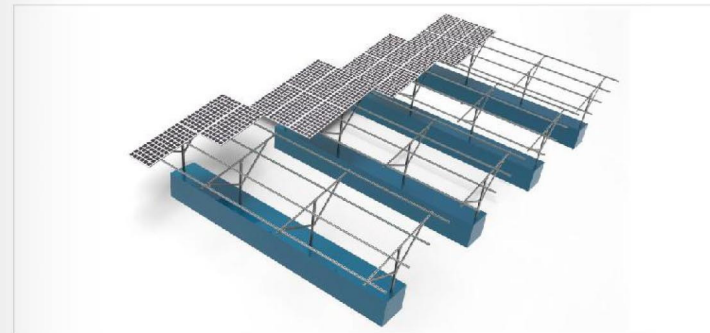
⑤ HPX-LYZZJ



④ HPX-LYZZJ

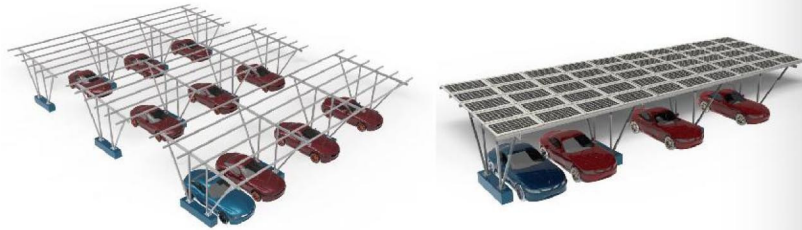


⑤ HPX-LYZZJ





GROUND MOUNTING SYSTEM CARPORT MOUNTING SYSTEM



Technical Characteristics

Neoenerji Shed System is made of all aluminum alloy and connectors is made of SUS304 material. Structure, which is easy to assemble, is concise, solid and looks in good appearance.

Anti-Snow Grade: 1.4 KN/m²

Anti-Wind Grade: 55 m/s

Angle: 0°-20°

Arrangement: Horizontal (2nd section/3rd section)

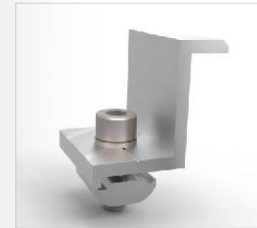
Minimum depth breaking into the ground: 1400mm

Ground Clearance: 2500-3500mm

Quality Assurance: 10 Years QA and 25 Years Service Life

Standards-Compliant: AS/NZS1170, Euro Code 8, DIN 1055, IBC 2006, JIS C8955/C8955-2011,GB50009-2012

Serial No.	Definition	Item No.	Dimension/ Characteristic	Material	Standard Item Material	Surface Technology
1	Single Row End Clamp	HPX-DCY-XX	32/35/40/45/50mm	Q235	Q235	Galvanizing Processing
2	Single Row Inner Clamp	HPX-DZY-XX	32/35/40/45/50mm			
3	Crossbeam Clamp	HPX-HPYK				
4	Crossbeam	HPX-HCR				
5	Cross Beam Connector	HPX-CCC	300mm			
6	Pre-Installation Support	HPX-CYZZJ	4th section/5th section/ 6th section/ 6th section			
	Longitudinal Beam					
	Square Pipe					
	Base					



① HPX-DCY-XX



② HPX-DZY-XX



③ HPX-HPYK



④ HPX-HCR



⑤ HPX-CCC



⑥ HPX-CYZZJ



⑥ HPX-CYZZJ



⑥ HPX-CYZZJ



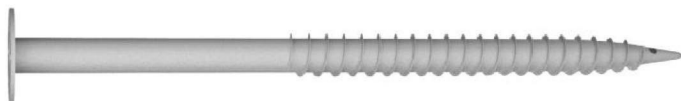
⑥ HPX-CYZZJ





GROUND SCREW GROUND SCREW

Non-adjustable Screw Pile with little blades



Item No.	Length L1 (mm)	Round Pipe Diameter D1 (mm)	Round Pipe Wall Thickness (mm)	Flange Diameter D2 (mm)	Material	Surface Technology
HPX-NLYP-1200	1200	Φ76	3 / 3.5	Φ200	Q235	Galvanizing Processing
HPX-NLYP-1400	1400					
HPX-NLYP-1600	1600					
HPX-NLYP-1800	1800					
HPX-NLYP-2000	2000					
HPX-NLYP-2500	2500					

Adjustable Screw Pile with little blades



Item No.	Length L1 (mm)	Length L2 (mm)	Round Pipe Diameter D1 (mm)	Round Pipe Wall Thickness (mm)	Flange Diameter D2 (mm)	Material	Surface Technology
HPX-LYP-1200	400	1200	Φ76	3 / 3.5	Φ200	Q235	Galvanizing Processing
HPX-LYP-1400		1400					
HPX-LYP-1600	600	1600					
		1800					
HPX-LYP-1800	800	1800					
HPX-LYP-2000	1000	2000					
HPX-LYP-2500	1200	2500					

Screw Pile with big blades



Item No.	Length L1 (mm)	Round Pipe Diameter D1 (mm)	Round Pipe Wall Thickness (mm)	Flange Diameter D2 (mm)	Material	Surface Technology
HPX-NBYP-1200	1200	Φ76	3 / 3.5	Φ200	Q235	Galvanizing Processing
HPX-NBYP-1400	1400					
HPX-NBYP-1600	1600					
HPX-NBYP-1800	1800					
HPX-NBYP-2000	2000					
HPX-NBYP-2500	2500					

Remarks:

Dimension of Screw Piles listed in the tables are common used styles only. Special dimension is able to be customized according to customer actual demands.

